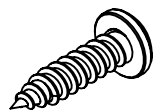
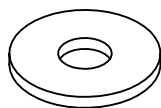


Hardware:

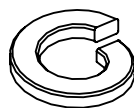
*Note: Hardware kits are determined by the upright tube size. (25mm,30mm,&32mm) Confirm you have the right size brackets before install. All necessary hardware is found inside black box.



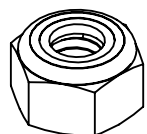
M4x20mm #2 Phillips
(6X)



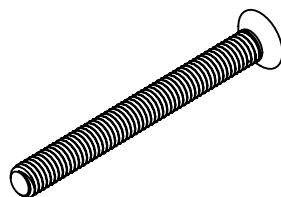
M6 Flat Washer (2X)



M6 Spring Washer (2X)



M6 -10mm Hex Nut
(2X)

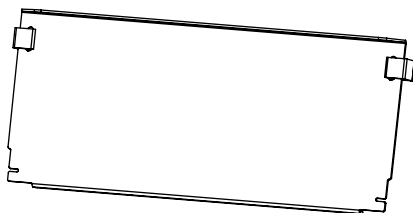


M6x60mm #3 Phillips
(2X)

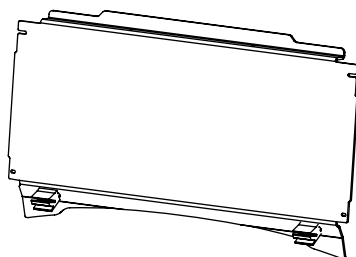
Tools:

- 3/8" Ratchet
- 10mm Wrench or socket
- #2 Phillips Screwdriver
- #3 Phillips Screwdriver
- Rubber Mallet
- Razor Blade
- Tin Snip Pliers

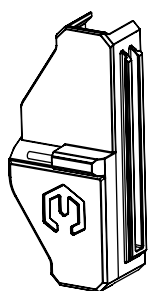
Components:



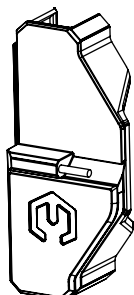
Top Windshield Assembly
(profile shape may vary)



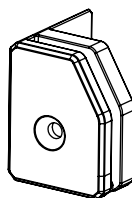
Bottom Windshield Assembly
(profile shape may vary)



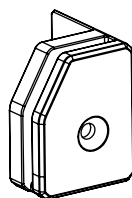
Left Hinge body



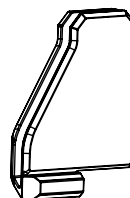
Right Hinge body



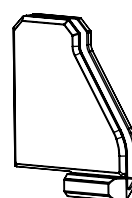
Left Lower Retainer



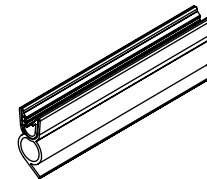
Right Lower Retainer



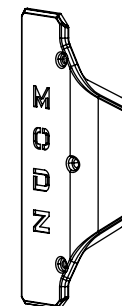
Left Hinge



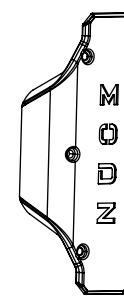
Right Hinge



Rubber Edge Gasket



Left Hinge
Cap



Right Hinge
Cap

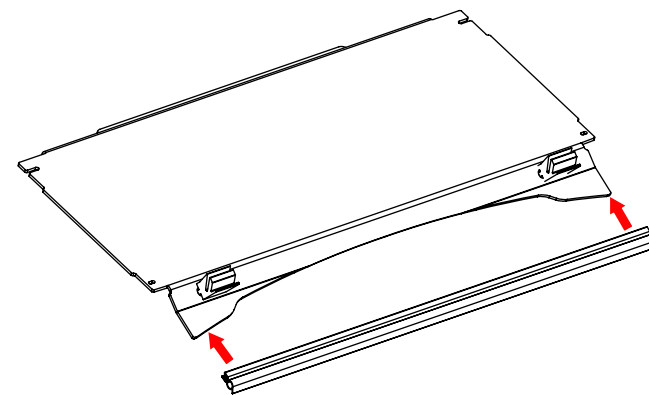
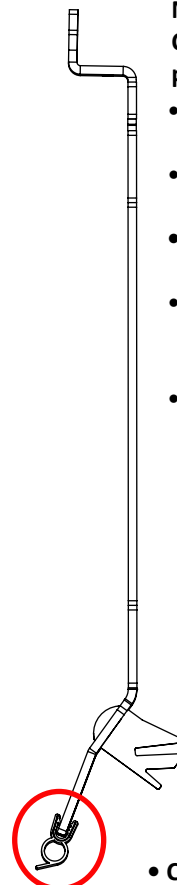
STEP 1:

- Remove stock windshield
- Remove stock side view mirrors.

STEP 2:

Note: To avoid scratching or damaging during assembly. Collapse the corrugated box that the windshield came in and place flat on the ground.

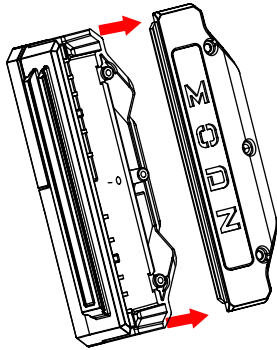
- Starting with peeling off the protective film found on the front and back of the assembly.
- Measure and Trim the rubber gasket included in your kit with the cutting tool of your choice.
- **NOTE:** The rubber edge molding has a metal core. For best cutting results we recommend tin snip pliers, reciprocating saw
- Install rubber gasket on the bottom of the windshield. Starting at one end and slowly pressing the gasket onto the windshield's edge.
- Use a rubber mallet if needed and confirm the gasket has fully seated on to the windshield.



- Confirm the rubber gasket is in the correct orientation.

STEP 3:

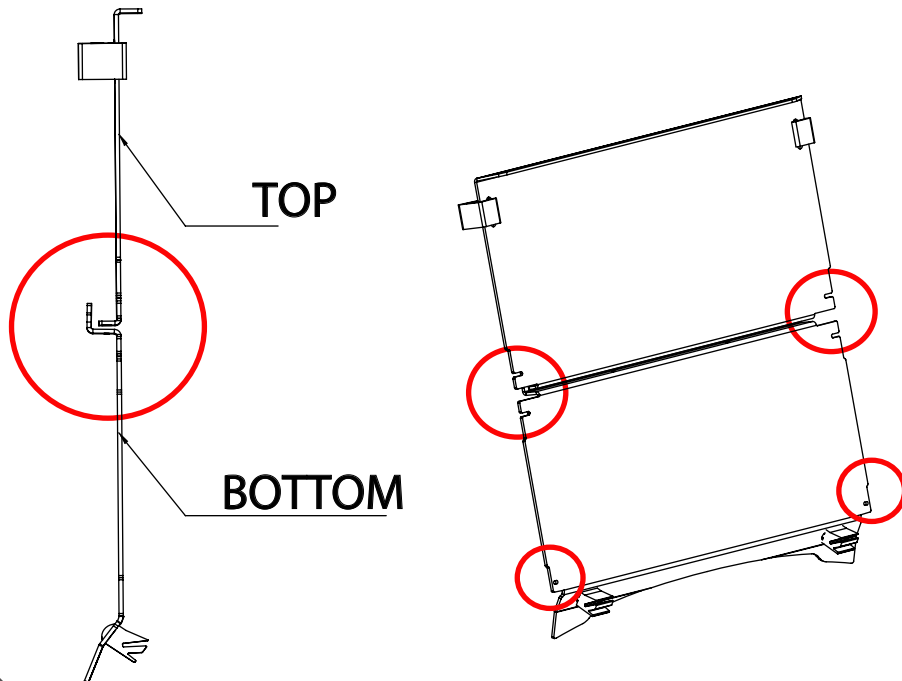
- Remove the left and right hinge body caps and set to the side.



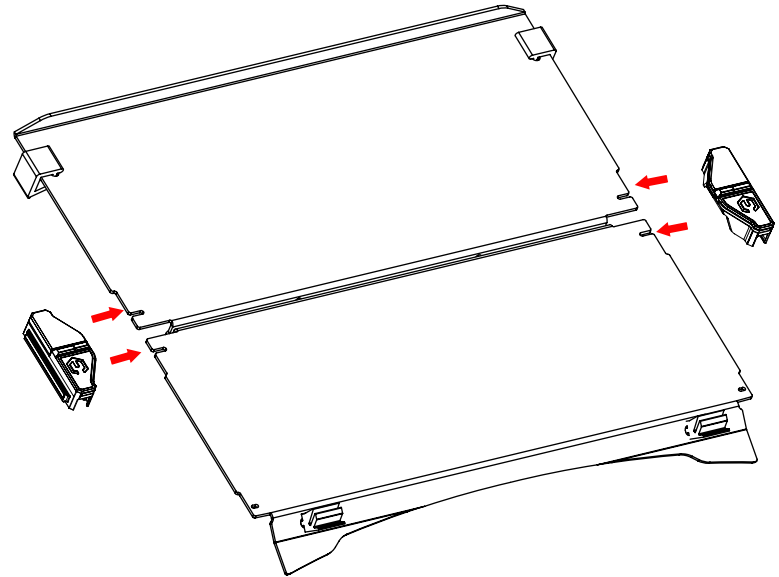
STEP 4:

- Place both top and bottom windshield flat on the ground in the orientation shown below. To avoid damaging use the cardboard box as a work surface.
- Locate the slots in the top corners of the bottom windshield, and in the bottom corners of the top windshield.

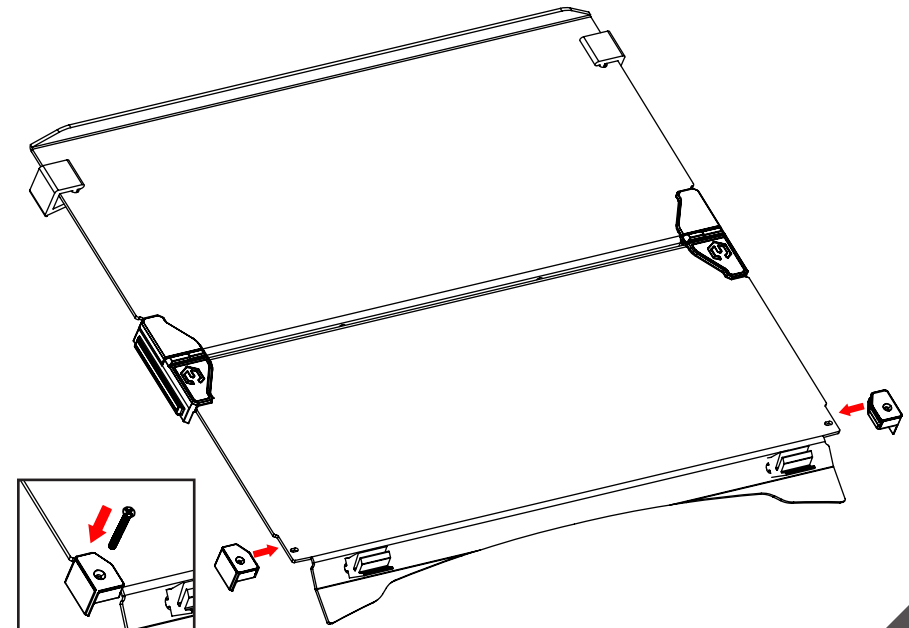
WINDSHIELD ORIENTATION the Top and bottom should nest in the middle like in the image above.



- Slide the right and left hinge assemblies into the designated slot on the windshields.

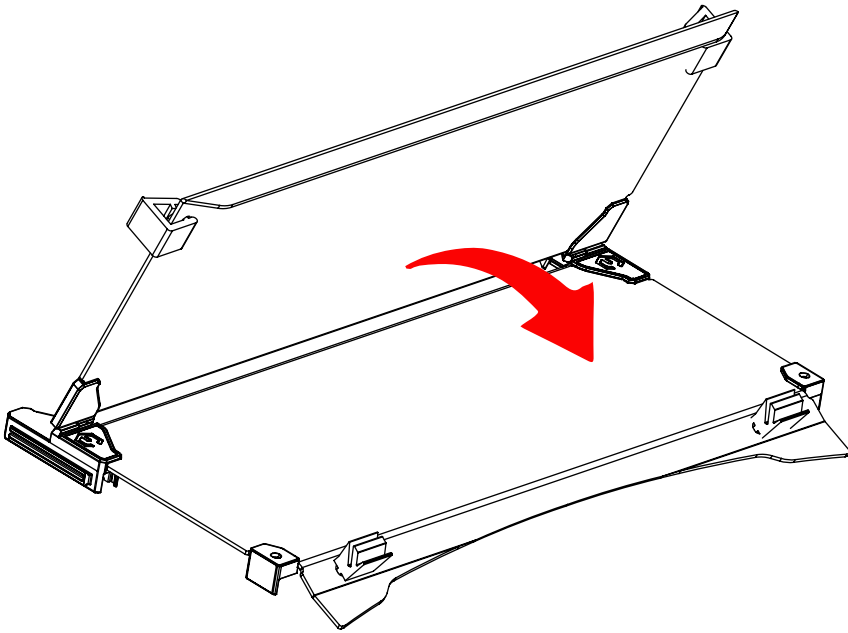


- On the bottom windshield locate the mounting holes in the bottom corners. Install both bottom retaining clips and place the m6x60 Phillips head screws into the holes on the retaining clips.

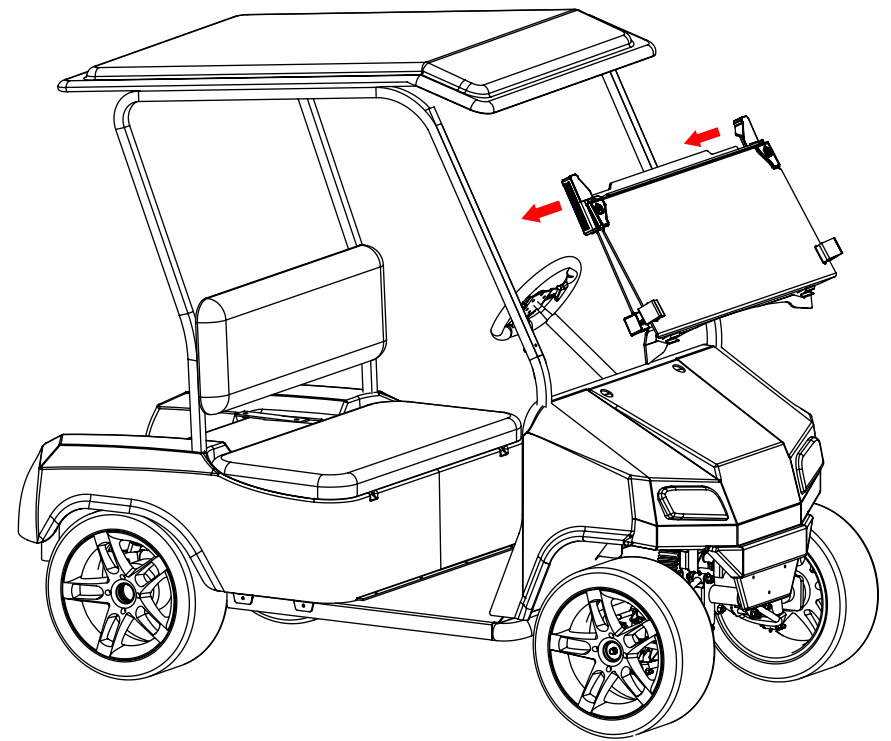
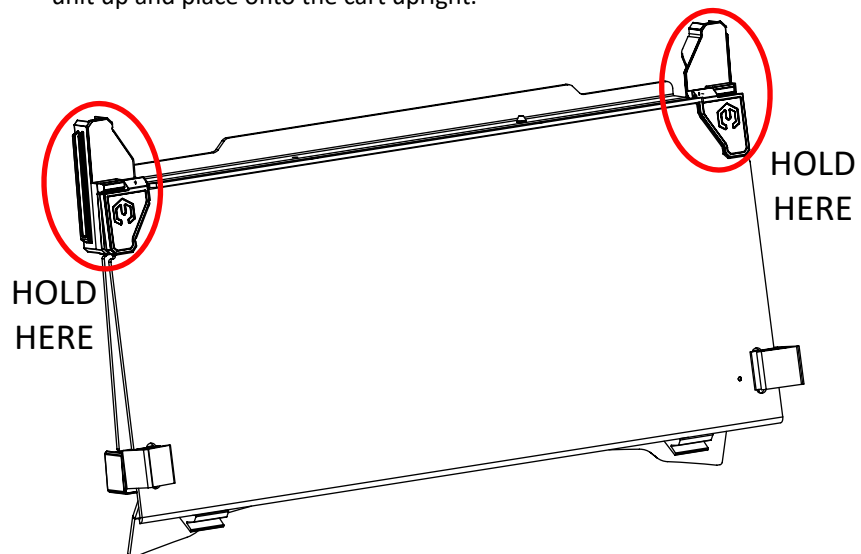


STEP 5:

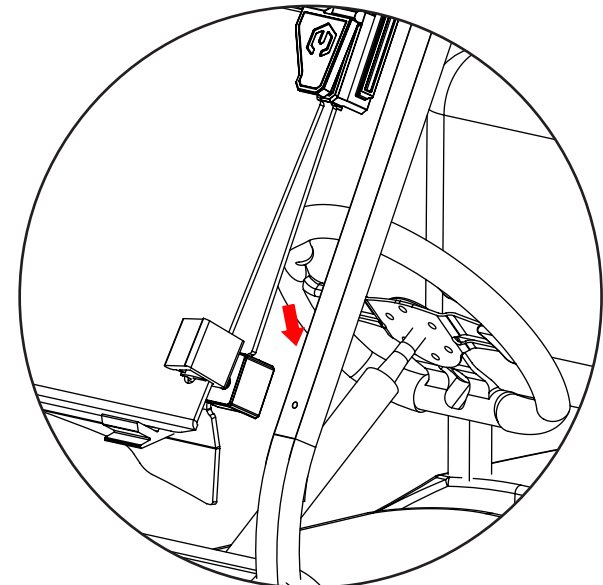
- Keeping the bottom windshield assembly fixed. Rotate the top windshield assembly until the top flange makes connection with the bottom rubber retainer.



- With two hands holding the hinge bodies firmly in place lift the assembled unit up and place onto the cart upright.

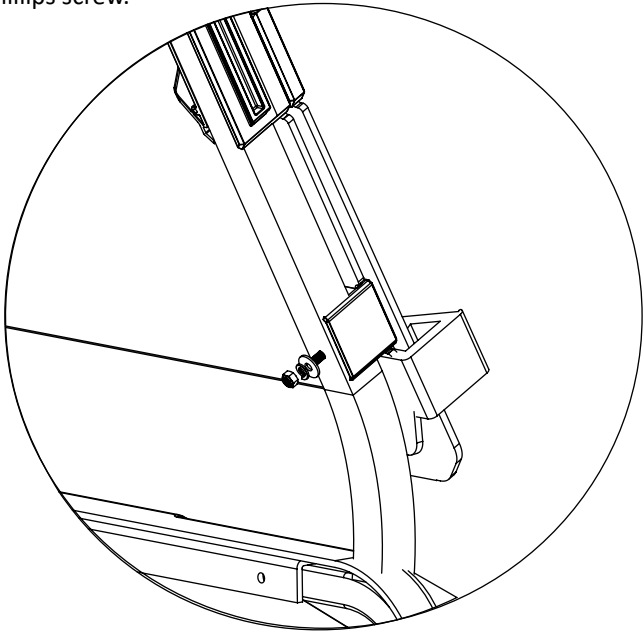


- Line up the M6x60 Phillis head screw into the mounting hold found on the cart's upright.



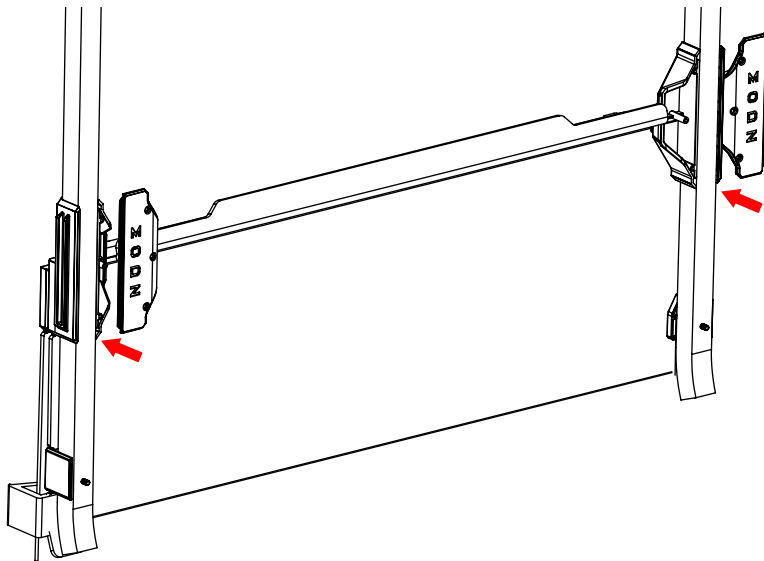
STEP 6:

- Install the M6 flat washer, spring washer and 10mm nut onto the m6x60 Phillips screw.

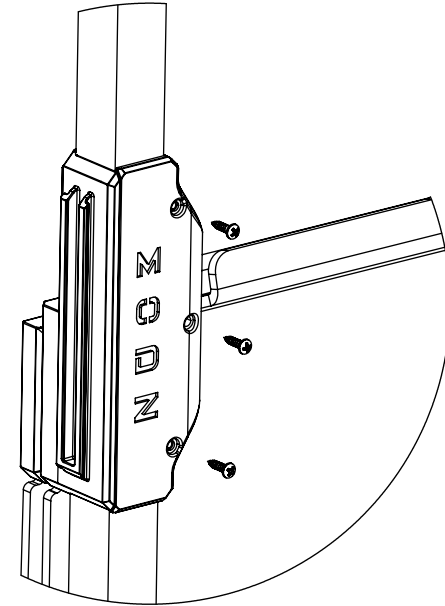


STEP 7:

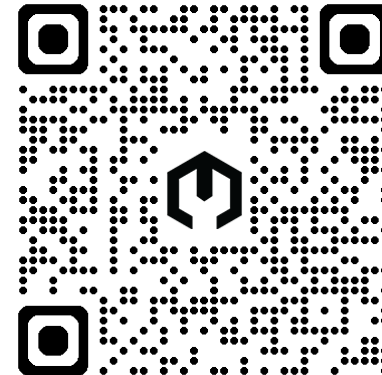
- Install both right and left Hinge body caps. Place the outer lip under the outer edge of the hinge body first.



- Secure using the M4x20 Phillips head screws.



Scan the QR code below for more helpful information
on your new MODZ Windshield



www.ridemodz.com/modz-windshield-instructions